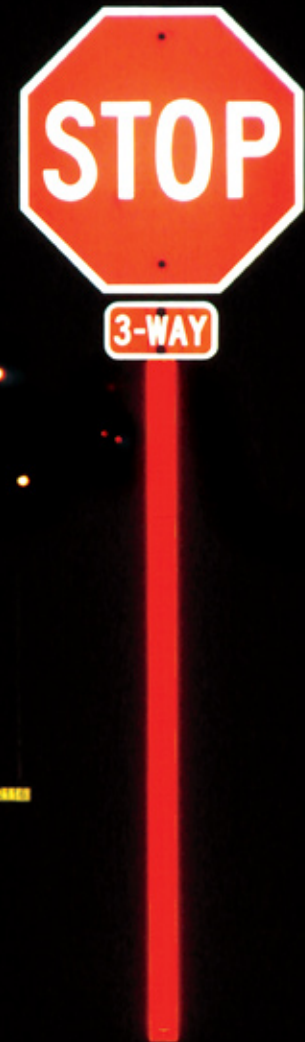




Davidson Traffic Control Products

# Sign Post Reflectors

*Bright retro-reflective post cover improves day & night visibility...quickly & inexpensively*



*Left to right:  
Standard square steel post,  
Post Reflector in daylight,  
Post Reflector at night*



*"Creating Products to Save Lives"*

## Sign Post Reflectors

**Draw attention to your signs with highly-reflective post panels, day or night, rain or shine.** Prismatic reflective sheeting increases conspicuity and makes your sign stand out in low light conditions.

Increase the visibility of traffic signs and lower traffic accidents with a simple accessory compatible with existing sign posts that installs in seconds. Call attention to school crosswalks, barriers, evacuation routes, dangerous roadside objects and many other signs without major expense or renovation.

**Sign Post Reflector Panels** are easy to install. Mounts in minutes with pressure sensitive adhesive or anti-theft hardware. Sheeting is bonded to the UV-stabilized plastic panel, and all panels include peel-and-stick permanent adhesive strips to attach the panels to the sign posts, or optional hardware.

Turn a new or existing **U-channel, wood, or square steel tube sign post** into a reflective sign assembly.



## Features:

- Quick & easy to install - in minutes
- Usable on any new or existing post
- Durable, UV-stabilized plastics
- Anti-theft hardware available
- Features 3M Prismatic Sheeting

Critical traffic signs can go unseen until the last minute in inclement weather or when partially obscured by landscaping or other obstacles. Modern headlights designed to reduce glare for oncoming motorists create a lower beam of light than older generation lights. Aging drivers can benefit from an extra 150 to 200 feet of viewing distance when approaching traffic signs. All of these factors illustrate the importance of increasing the reflectivity of a sign to grab a driver's attention!



## Typical Applications:

- Stop Signs
- School Crosswalk Signs
- At-grade Railroad Crossings
- Directional Markers
- Speed Zones

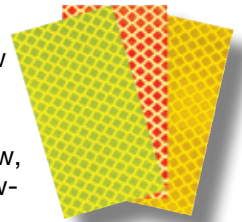
## Sign Post Reflector Options:

### Sizes:

- Standard lengths 60 and 72 inches
- Custom lengths by special order
- Standard widths are 2 and 3 inches

### Sheeting Options:

- 3M High Intensity Prismatic (HIP):  
Red, White, Yellow
- 3M Diamond Grade (DG):  
Red, White, Yellow, Fluorescent Yellow-Green



### Mounting Options:

- Pressure-sensitive VHB (Very High Bond) adhesive tape (*optional*)
- Anti-theft hardware (*optional*)
- Standard nuts and bolts (*optional*)

### Meets MUTCD Section 2A.21

*MUTCD Section 2A.21 Posts and Mountings:*

*Option: Where engineering judgment indicates a need to draw attention to the sign during nighttime conditions, a strip of retro-reflective material may be used on regulatory and warning sign supports.*



Davidson Traffic Control Products now offers free downloadable CAD drawings and specifications from our engineering website. For details, contact your local sales representative or e-mail [hwysales@pexco.com](mailto:hwysales@pexco.com)



**Davidson Traffic Control Products**  
*"Creating Products to Save Lives"*

3110 70th Ave East • Tacoma, WA 98424 • (877) 335-4638  
e-mail: [hwysales@pexco.com](mailto:hwysales@pexco.com) • [www.DavidsonTraffic.com](http://www.DavidsonTraffic.com)

