

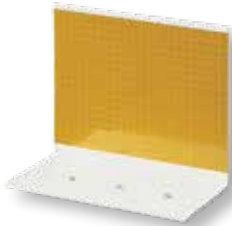


Davidson Traffic Control Products

Options and Applications for

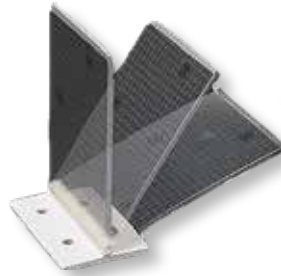
# PCBM Barrier Reflectors

High Impact Barrier Mount Delineators



## PCBM-12

The most popular of our PCBM's, for work zone traffic control or permanent delineation. It has over 12 square inches of reflective sheeting and the versatility of either top or side mount placement. The added brightness gives motorists additional response time when driving through hazardous areas day and night.



## PCBM-T12

This popular barrier mount reflector features a built-in polyurethane hinge that provides tremendous flexibility and impact resistance.

## 50mm Barrier Flex Tab

A flexible polyurethane marker mounts to moveable steel guardrail or median barrier walls for temporary or permanent installations. It features double-sided prismatic reflective sheeting and is available with or without factory applied adhesive pad. Also available in longer lengths.



## PCBM-T9

The hinged version of the PCBM-9 is designed for use on top of movable barrier systems.



Our unique "**Gator Jaw**" hinge allows the T12 reflector to take an impact and spring back to its full, upright position. This reduces maintenance and provides for long-lasting delineation.

## PCBM-9

The most economical of Pexco's barrier mount reflectors, the PCBM-9 meets the minimum MUTCD requirements for reflectivity with 9 square inches of reflective sheeting. The PCBM-9 can be used for top or side mount applications.



— Made in the USA —



### Big Dog PCBM

The Big Dog utilizes 96 square inches of fluorescent orange prismatic sheeting to provide more brightness than any other barrier reflector. This extra large top-mount reflector was designed for work zones where additional brightness is critical for guiding traffic.



### PCBM-15

Used for top-mount installations in heavy snow regions because the 8 inch height places the reflector above the snow on the barrier wall.

## HOT Dots™

Where acrylic reflectors fail, we shine!



### HOT Dot 3" Centermount Reflector

An abrasion and impact resistant centermount reflector. When impacted, the HOT Dot only dimples where acrylic reflectors will shatter. They never lose reflectivity due to water penetration and are available in 5 bright colors.



### Little Dog PCBM

The Little Dog PCBM provides incredible brightness with 72 inches of reflective sheeting. This smaller top-mount barrier reflector adds safety to hazardous traffic conditions.

### PCBM-L16

The PCBM-L 16 is designed to create delineation that is 48 inches above the roadway, as required by many states. Pexco's PCBM-L 16 is easily mounted on the top of a standard 32 inch barrier wall. The 3" x 12" reflector provides the same amount of visibility as that of our Flexi-Guide 400 and 500 roadside delineator posts.



### PCBM-9HD

This centermount barrier reflector features either a single or double sided application of the HOT Dot and offers bright, impact resistant reflectivity where acrylic reflectors are traditionally used.

HOT Dots is a registered trademark of the Orafol Reflexite Corporation, Avon CT. All rights reserved



Click the CADdetails link on our website for technical drawings & specs or contact us at [hwysales@pexco.com](mailto:hwysales@pexco.com)



Scan QR code to access *Pexco's Traffic Safety Channel* on YouTube



Pexco is a leading manufacturer of recycled traffic control products



## Pexco LLC / Davidson Traffic Control Products

3110 70th Avenue East, Tacoma, WA 98424 • USA: 877-335-4638 • Intl: +1-253-284-8000

Email: [hwysales@pexco.com](mailto:hwysales@pexco.com) • [pexco.com/traffic](http://pexco.com/traffic)

