



Davidson Traffic Control Products

# Temporary Overlay Markers

Flexible Raised Pavement Markers



*"Creating Products to Save Lives"*



TOM Marker

## TOMs are the Smart Choice for Marking Newly Paved Roads

### Keep work zone markings from disappearing in the rain.

Work zones create hazardous driving conditions for drivers. Each year thousands of people are killed in work zone related accidents. Improved road markings and safer application methods hold the promise of improved safety and reduced accidents.

All road markings are bright when new, but most lose reflectivity when wet. These markings simply disappear on the road when drivers need them the most. TOMs are designed to provide positive guidance day and night, wet or dry. Unlike standard removable pavement markings, TOMs appear even brighter in the rain than they do when dry!

TOMs make installing work zone markings quick & easy. Our markers are engineered for easy application and removal to reduce the amount of time drivers and workers are exposed to work zone hazards. Newly marked roads can be opened to traffic immediately following application. They can be removed from asphalt and concrete surfaces intact at temperatures above or below freezing.



Free downloadable CAD drawings and specifications from our engineering website. For details, contact your sales representative or email [hwysales@pexco.com](mailto:hwysales@pexco.com)

### Temporary Overlay Markers Save Time, Money and Lives!

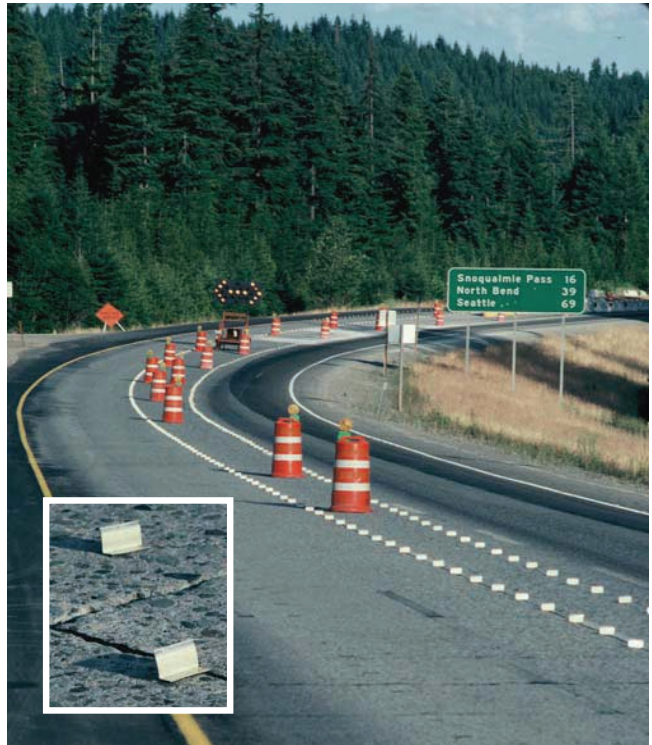
In an era of tight budgets, Temporary Overlay Markers (TOMs) are your solution for improved safety and significant cost savings. TOMs can be installed by one worker without additional equipment in just seconds. TOMs effectively simulate solid lines both day and night, can be installed in just seconds, and eliminate the need for expensive temporary striping.



*"These flexible markers stayed for a long period of time and when they were damaged they were easy to replace"*

### Self Adhesive Markers Take Seconds to Install and Remove

Quick, easy placement reduces your crew's time on the road and exposure to traffic. Our unique adhesive system keeps the TOMs securely in place. TOMs save money in the removal process too! Unlike removable tape, which may or may not come up easily, or paint which must be ground off the roadway, TOMs are removed with just a simple tug and no costly equipment.



## Davidson Traffic Control Products

*"Creating Products to Save Lives"*

3110 70th Avenue East Tacoma, WA 98424 / (877) 335 4638  
e-mail: [hwysales@pexco.com](mailto:hwysales@pexco.com) [DavidsonTraffic.com](http://DavidsonTraffic.com)

