

PEXCO

TRAFFIC

2025 PRODUCT CATALOG | Vol. 15



At Pexco, we are passionate in our pursuit of excellence and dedicate ourselves to the very best quality in everything we do. We are always developing new products, being aware of the ever-changing market conditions and need for improved safety. Our long history of creating solutions to help make our roadways safer is just one facet of Pexco’s ongoing commitment to innovation and leadership in the markets we serve. We look forward to serving you in the year ahead!

TABLE OF CONTENTS

Adhesive Application Chart.....	20
Adhesives and Anchors.....	19
Barrier Reflectors.....	12
Barricades — Type III.....	13
Barricades — Temporary Pedestrian Access Route (TPAR).....	14
Base Options for FG 300 Posts.....	5
Bicycle Safety Products.....	6
Baby Road Markers.....	18
City Post®.....	1-2
DP 200 Round Channelizer Posts.....	9
Enhanced Linear Delineation (ELD).....	11
FG 300 Ground Mount Delineator Posts.....	8
FG 300 Surface Mount Channelizer Posts.....	3
FTGM Ground Mount Delineator Posts.....	8
Flexible Roadside Delineators.....	7
Green Cross — Pedestrian Safety Products.....	15
Guardrail Reflectors.....	11
Interstate Grade Curb System.....	4
Island Alert Curb Reflectors.....	10
“O-Frame” Parade-Style Barricade.....	13
Parking Lot Sign and Base System.....	16
Raised Rumble Strips.....	18
Sign Post Reflectors.....	10
Super TOM / Super TRPM.....	18
Snow Poles and Posts.....	7
TSM/FTSM Surface Mount Posts.....	5
Turnpike Grade Curb System.....	4
Vertical Panels.....	16
Work Zone Pavement Markers.....	17

We are pleased to introduce our Engineering Support website, CADdetails. Please visit our listings at www.CADdetails.com for information on our traffic control products and access to free, downloadable files which allow designers and engineers to place Pexco Products right into traffic control plans and contracts. Engineering drawings are available in five formats: AutoCAD DWG, Adobe PDF, AutoCAD DWF, Printable CAD, and VectorWorks VWX.

To use this free service:

1. In the “Quick Search” box, enter the word “Pexco” and click on “Pexco, Davidson Traffic”
2. A list of products is displayed or you can choose “Click Here for Products and Listings”
3. Click on your product of interest (i.e. City Post)
4. A window will open, prompting first time users to register
5. Under each product, the following information is available:

A. ABOUT — general features, advantages and benefits

B. MEDIA — download product information sheets

C. CAD and 3D Downloads — detailed product

D. CAD drawings for inclusion in bids and contracts.
“Drag and drop” engineering drawings directly into your plans using “i-drop”

E. SPEC — material specifications for use in bids and contracts

F. ASK A QUESTION — creates an email from registered users to Pexco requesting additional information

This service is free to all registered users.

If you have questions, feel free to contact us; we will be happy to assist. Thank you for your interest in Pexco.

SOLUTIONS FOCUS



Barrier Delineation

ELD—Enhanced	
Linear Delineation	11
PCBM's	12
PCBM's with Gator Jaws Hinge ...	12



Bike Lanes/Cycle Tracks

City Post®	1-2
FG 300 Posts	3, 8
DP 200 Posts	9



Channelization

City Post®	1-2
FG 300 Posts/FG 300	
Curb Systems	3-4
TSM/FTSM Surface Mount Posts ...	5



Guardrail Delineation

Delineator Posts	7
ELD—Enhanced	
Linear Delineation	11
Guardrail Reflectors	11



Managed Lanes/HOT Lanes

City Post®	1-2
FG 300 Posts	3, 8
FG 300 Curb Systems	4



Closures / Paths / Restriction Barricade Solutions

Type III Barricades	13
Temporary Pedestrian	
Access Routes	14
Parade style legs	13



Pedestrian Safety

O-Frame	13
TPAR	14
Pedestrian Safety Products	15



Run-Off-the-Road Mitigation

Roadside Delineators	7
FG 300/FTGM Ground Mount	
Posts	8
ELD—Enhanced	
Linear Delineation	11



Work Zone Safety

Type III Barricades	13
FG 300 Posts	3, 8
Work Zone Pavement Markers	17

CITY POST®

Pexco's City Post is the highest-performing channelizer post on the market today. The City Post remains flexible, even at extremely high and low temperatures, and returns to a full upright position even after 100 impacts at 70 mph / 112 km/h. The City Post was created using advanced engineering resins to provide maximum strength and superior durability. The solid, single unit polyurethane construction absorbs impacts and rebounds instantly.

Testing and Certificates

- Texas A&M Transportation Institute (TTI)
- 100+ impact NCHRP 350 test at 70 mph / 112 km/h
- Less than 3 degrees off vertical
- Not a single failure
- EN 12767 Passive Safety Certified
- MASH-16 — compliant
- MUTCD — compliant
- Tested on concrete and asphalt
- **Three styles to cover all installation requirements:** Embedded Anchor Cup (EAC), Surface Mount (SM), and Glue Down (GD)



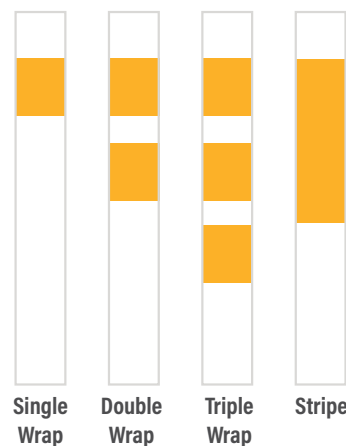
Key Features

- 3.25" round post with a slim, sleek profile
- Thermoplastic Polyurethane for high impact resistance and quick, sharp rebounds
- Minimizes worker exposure
- No mechanical springs to fail
- 360° of reflectivity
- 72% reduction in life cycle costs
- 90% reduction in worker risk
- Choose white, yellow, fluorescent orange, or black (custom colors available)
- UV resistance keeps the City Post looking fresh and new after prolonged periods in the elements

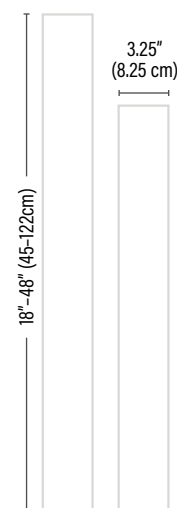
City Post Options

Reflective sheeting options

Choose your configuration:



Lengths



Information Sheets

EAC



SM



GD



Applications for the City Post include:

- HOT and HOV Lanes
- Dangerous Curves
- Toll Plazas
- Bike Lanes
- Parking Lots
- Airports
- Gore Areas
- Traffic Circles
- Pedestrian Walkways

CITY POST® (CONTINUED)



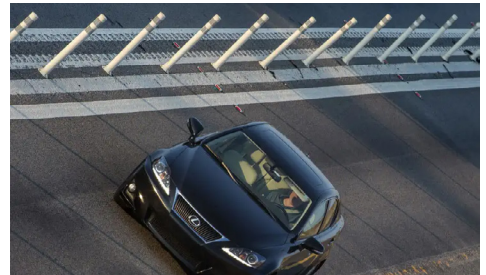
Original City Post EAC with Embedded Anchor Cup

- Easy "spin-in" installation
- Installs in concrete or asphalt
- Available with 2" or 4" anchor cups
- Optional threaded cap for a flush pavement surface when post is removed
- Non-protruding base is ideal for bike lanes and pedestrian pathways



City Post SM Surface Mount

- 72% reduction in life cycle cost
- 90% reduction in worker risk
- 1-piece construction
- Quick, sharp rebound
- Bolt-down installation
- No mechanical springs to fail
- Installs in concrete or asphalt
- Minimizes worker exposure
- Maximizes public safety
- 360° reflectivity



City Post GD Glue Down

- No drilling, faster installations
- Installs on concrete or asphalt
- Exclusive "pinwheel" base
- Installs with road marker epoxy
- 1-piece construction
- Glue down installation
- No assembly required
- No springs to fail



FG 300 SURFACE MOUNT CHANNELIZER POST

The clover-leaf design of the FG 300 tubular marker provides far better rebound than simple round tubes. The curving of the sides of the FG 300 tube changes the moment of inertia and builds up tremendous potential energy, resulting in a quick and sharp rebound after impact.



The FG 300 is offered in three grades:

- Model PE for general applications
- Model UR, the industry workhorse
- Model EFX for your toughest installations

All three grades are compatible with our full line of bases (page 5) and FG 300 Curb Systems (page 4).

No metal pins in bases to rust or seize — simple installation and replacement of damaged posts.



FG 300 Family of Posts — Model Comparison

Post Model	PE	UR	EFX
Rating	Good	Better	Best
Standard Colors	White, Yellow, Fluorescent Orange, Black		
Impacts @ 60 mph	15+	50+	60+



Testing and Certificates

- Proven durability on the NTPEP and TTI test decks
- NTPEP Reports #TTCD 6020.1 and 6021.11
- EN 12767 Passive Safety Certified
- MASH-16 — compliant
- MUTCD — compliant

Key Features

- Posts available in white, yellow, fluorescent orange, and black; custom colors available
- Black or matching color bases (see page 5)
- Mounts with butyl pads, hot melt bitumen, epoxy, Super Bundy®, or FG 300 anchor bolts (see page 19)

Locking Pin Removal Tool



FG 300 Top Cap options



Learn More:



FG 300 GRADE CURB SYSTEMS



Interstate Grade Curb (IG)

The **FG 300 Interstate Grade (IG) Curb System** is a lane separation system that provides efficient and cost-effective channelization of traffic on freeways, toll-ways, city streets and rail-highway at-grade crossings. This one-piece curb system links together for a continuous “picket fence” effect and consists of modular raised curb sections mountable by emergency vehicles. The Interstate Grade Curb System features our FG 300 UR and EFX posts, two of the toughest channelizer posts on the market.

Turnpike Grade Curb (TG)

The **FG 300 Turnpike Grade (TG) Curb System** is a raised lane separator with durable upright channelizer posts that provide efficient and cost-effective channelization of traffic on Managed Lanes, 2-way 2-lane Work Zones and other areas where discontinuous channelization is desired. The “picket fence” effect divides lanes going in the same direction or opposite directions in high-speed, high-volume applications where continuous curb is too costly or not needed. Use where pavement markings alone are not sufficient to safely channelize traffic.

Testing and Certificates

- MASH-16 approved TL3 (FHWA Letter WZ-361)
- NCHRP 350 accepted (FHWA Letter WZ-193)
- MUTCD – compliant

Testing and Certificates

- MASH-16 approved TL3 (FHWA Letter WZ-362)
- NCHRP 350 accepted (FHWA Letter WZ-282)
- MUTCD – compliant

Key Features

- Low maintenance; super-tough FG 300 polyurethane posts
- Curb sections install in just minutes with one person
- Installs with 4 bolts, or adhesive for temporary projects
- Design allows for curved or circular installations for roundabouts

Key Features

- Low maintenance; super-tough FG 300 polyurethane posts
- Engineering polymer allows for superior toughness at all temperature extremes
- Engineered to stand up to the toughest of conditions
- Only requires 4 bolts per unit, quick and easy to install
- Installs with bolts, or adhesive for temporary projects

Applications for the FG 300 Curb Systems include:

- Rail-highway “Quiet Zone” crossings
- Acceleration lanes
- Left-Turn restrictions
- Through lane protection in busy urban areas
- Lane separation in 2-way 2-lane detours
- Traffic calming, roundabouts and traffic circles
- Toll plazas

Learn More:



TSM/FTSM MARKERS/BASE OPTIONS

The TSM series are general-purpose channelizer products, designed and built to meet MUTCD standards and easily pass the Standard NTPEP Test protocol. Ideal for use in cities, parking structures or other areas where roadway safety hazards exist.

Key Features

- Meets MUTCD standards
- 360° visibility on the TSM
- 180° flat visibility on the FTSM
- All plastic construction
- NTPEP protocol tested, NCHRP 350 and MASH-16 compliant
- 8" Round High-Impact Black Plastic Base
- Kit includes channelizer, hinge and base

Standard colors:

White, Yellow, and Orange.

Special order colors available with minimum order

Standard Lengths:

36" or 48" tall

Reflective Tape:

Any standard flexible tape from the major manufacturers.

Tape configurations are separate line items added to the channelizer pricing.

TSM

FTSM



	Orange	White	Yellow
Tubular Surface Mount	TSM360 or TSM480	TSM36W or TSM48W	TSM36Y or TSM48Y
Flat Top Tubular Surface Mount	FTSM360 or FTSM480	FTSM36W or FTSM48W	FTSM36Y or FTSM48Y

All FG 300 Bases mate with all three grades of FG 300 posts — PE, UR and EFX



FG 300 Lite Black Base

Standard black surface mount base with quick release pins for general purpose applications.

- Mounts with butyl pads, hot melt bitumen, epoxy or FG 300 anchor bolts.



FG 300 Heavy Duty Colored Base

Extra tough colored base increases the visibility of posts by 15%.

- Available colors match our posts: yellow, white, fluorescent orange, and fluorescent yellow-green for added visibility.
- Mounts with butyl pads, hot melt bitumen, epoxy or FG 300 anchor bolts.



FG 300 Metro Base

A surface mount base designed for use where space is at a premium.

- It is a slimmer version of our standard 8-inch round surface mount base that is ideal for curbs, narrow roadways, tunnels, ferry terminals, and parking garages.
- Mounts with butyl pads, hot melt bitumen, epoxy or FG 300 anchor bolts.
- The Metro Base is available in white, yellow, fluorescent orange, and green.

BICYCLE SAFETY

The Need for Safer Bicycle Lanes

Cities across the country are placing an emphasis on making more room for the cyclist population. The motivation is fueled by the need to reduce congestion and improve overall safety for all who use our nation’s roadways. Separated bike lanes have been shown to be safer than biking in the street and more likely to encourage biking. State-of-the-art designs are being implemented nationwide to create separated spaces for cyclists. Channelizing posts are an important tool in the “cycle track” toolbox.



Bicycle Friendly Posts Offer High Performance, Durability, and Improved Safety

For traffic engineers designing bike tracks, tubular markers are an invaluable tool to prevent cars from encroaching on bike lanes. They can also alert and slow down drivers and cyclists as they approach a hazardous intersection.

Pexco’s polyurethane posts are tough, ensuring a long working life, and forgiving to cyclists due to their soft and pliable structure. They have proven durability and long life resulting in reduced maintenance costs.

Pexco’s FG 300 UR, EFX, City Posts, and Bike Bollards are offered in a variety of configurations to improve bicycle safety.

FG 300 narrow with narrow Metro Base



FG 300 narrow with heavy duty base



Bike Bollard



The Benefits of Bicycle Friendly Posts for Bike Lanes:

- Provides clear delineation and physical separation
- Highly visible day and night
- Reduces vehicle entry
- Improves cyclist and pedestrian safety
- Allows for emergency vehicle access
- Recognized traffic control device
- Low maintenance

For more information on Bike Lane Safety Products, including links to helpful resources like the FHWA’s Separated Bike Lane Planning and Design Guide, visit www.pexco.com/traffic.



Learn More:



FLEXIBLE ROADSIDE DELINEATORS / SNOW POLES



Flexible Roadside Delineator Posts

These driveable flexible guide posts for roadside delineation are made of recycled engineering polymers to withstand repeated impacts. They resist discoloration when exposed to UV rays and will not rust, rot or splinter. They offer strength, flexibility and durability to stand in the harshest weather conditions.

Roadside delineator posts are used for marking roadway shoulders, guiding snow plow operators, and marking utility line locations.

In North America, highways are marked with yellow posts on the left, and white posts on the right. In snow country, the beginning of a run of guardrail can be marked with a red post, and the end of the run marked with a green post. These color-coded posts provide added visibility to snow plow operators, limiting damage to the guardrails.

FG 500 posts for marking utility lines are available in additional APWA colors: Red (power), Orange (telecom), Blue (water), Purple (irrigation) and Green (sewers).

Testing and Certificates

- NTPEP tested (NTPEP Report 96-124)
- NCHRP 350 accepted (FHWA Letter SS-71)
- MASH-16 — compliant
- MUTCD — compliant

Key Features

- The FG 400 and 500 posts can be cut to any length; three standard colors: white, yellow and gray, other colors by special order
- The single curve profile of the FG 500 provides maximum display area for vertical messages visible from wide angles
- The double curve FG 400 provides more rigidity to reduce fluttering in the wind
- Factory-applied reflective sheeting for nighttime visibility
- Message decals are available and can be applied at the factory

Snow Poles and Posts

These driveable flexible guide posts for roadside delineation are made of recycled engineering polymers to withstand repeated impacts. They resist discoloration when exposed to UV rays and will not rust, rot or splinter. They offer strength, flexibility and durability to stand up in the harshest weather conditions.

Key Features

- Exclusive honeycomb cross-section provides great strength and keeps poles lightweight
- Round poles in six vivid UV stabilized colors are highly visible
- Reflective sheeting can be applied for increased night visibility



Learn More:



Applications: marking fire hydrants, culverts, junction boxes and drains; setting snowmobile trails and cross-country ski trails; supporting banners and signs; securing snow fences, delineating lift lines

FTSTR AND FG 300 GROUND MOUNT DELINEATOR POSTS

Flat Top Star Ground Mount FTSTR

The **FTSTR series** are general-purpose delineators, designed and built to meet MUTCD standards and meet Standard NTPEP Test protocol. This is a perfect delineator for use on roadway shoulders. Steel anchor provides a reusable anchor point in the event replacement is needed. The post is 2.25" in diameter, sold as a complete kit consisting of the delineator, hinge, and steel anchor.

Key Features

- Meets MUTCD standards
- 180° flat visibility on the FTSTR
- All plastic construction
- NTPEP protocol tested, NCHRP 350 and MASH-16 compliant
- "12" or 18" Telspar 2" anchor for easy installation
- Easy install and replacement

Standard colors:

White, Yellow, and Orange.

Special Order Colors – with minimum order

Standard Lengths:

48" tall, 54" tall for WV and ME

Reflective Tape:

Any standard flexible tape from the major manufacturers. Tape configurations are separate line items added to the delineator pricing.



	Orange	White	Yellow
Flat Top Star Ground Mount	FTSTR48O	FTSTR48W	FTSTR48Y

FG 300 Ground Mount Delineator Posts

The **FG 300 Ground Mount** delivers **durability, low maintenance and quick replacement** with a clover-leaf design that provides far better rebound than simple round tubes.

The unique polyurethane coupler connecting the upright tubular post to the steel anchor can take an impact from any direction and still keeps the post upright and functional. It has been proven to withstand multiple high-speed impacts on the NTPEP Test Deck.

Combine ease of replacement, the geometry of the FG 300 and polyurethane – the toughest **flexible engineering polymer** – and the result is a **roadside post that sets new standards for durability and convenience.**



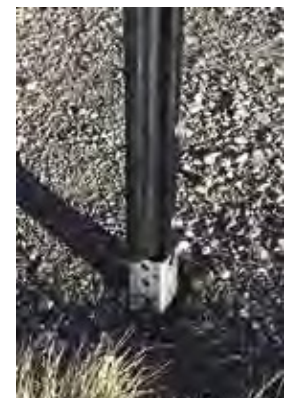
Testing and Certificates

- NTPEP tested (Report # TTCD 6025.5)
- MASH-16 – compliant
- MUTCD – compliant



Benefits

- **Simple** – single pin allows for quick and easy replacement of damaged posts
- **Durable and practical** – 2-part system uses a permanent anchor and replaceable upright post
- **Easy to install** – can be driven by hand or machine using common tools
- **Convenient** – anchor is a widely available 2-inch square steel tube



DP 200 ROUND CHANNELIZER POST

Flexible Roadside Delineator Posts

These 3-inch round polyurethane posts are highly visible, day and night. When placed at critical points along roadways, DP 200 posts help to clearly delineate driving lanes with their bright colors and reflective sheeting. The DP 200 remains flexible, even at extreme temperatures, and returns to an upright position after impact. Post can come in a variety of bright colors including orange, yellow, black, and white.

Testing and Certificates

- NTPEP Tested (TTCD 6024.1)
- MASH-16 — compliant
- MUTCD — compliant
- EN 13422 Certified

Key Features

- Durable thermoplastic polyurethane for high impact resistance from all directions
- 360° of reflective visibility
- Available up to 39 inches (1 meter) tall
- Simple installation and low maintenance — no metal parts to rust or seize
- UV Stabilized polymers
- Applications include: Traffic islands, dangerous curves, work zones, parking lots, airports, gore areas, highway railroad intersections, and traffic circles



ISLAND ALERT / SIGN POST REFLECTORS

Island Alert Curb Reflector

The Island Alert Curb Reflector is a low-cost safety solution designed to improve the visibility of raised islands, median noses, pedestrian refuges and similar roadway features.

The Federal Highway Administration recommends that all curbs at intersections, including median islands and other raised channelization, be delineated. The exceptional retro-reflectivity of Island Alert markers provides a clear visual cue to the motorist of the full-radius of raised medians, reducing accidents and improving safety. This simple device can be applied to almost any median nose shape or configuration due to its narrow, flexible design.

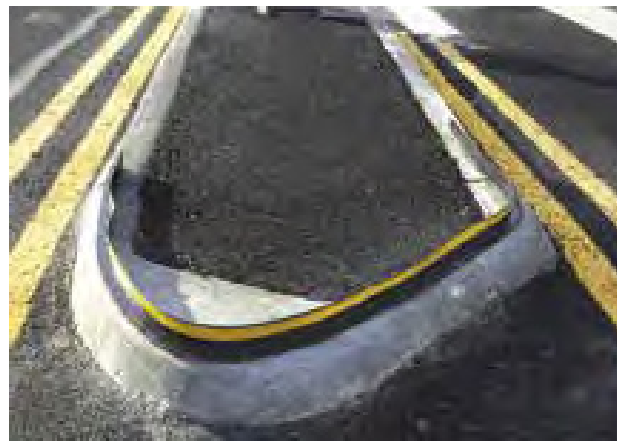
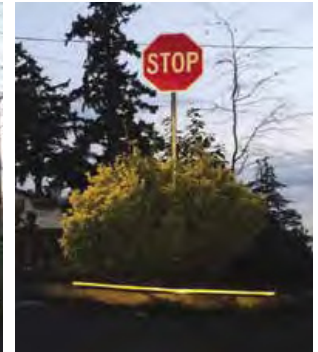
Benefits

- **Visible** — continuous ribbon of reflectivity
- **Simple** — prime, peel & stick application
- **Practical** — low-cost safety solution improves roadway safety
- **Flexible** — notched foot allows installation to match curvature
- **Durable** — UV-stable flexible polyurethane for long life in the field

Before



After



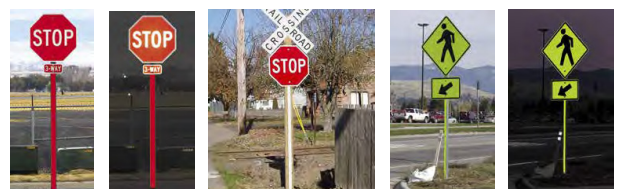
Flexible design wraps around any median

Sign Post Reflectors

Complex backgrounds in rural or urban settings make signs less noticeable. Pexco sign post reflectors are easy to install, and greatly increase visibility... day and night.

Benefits

- Reflective stripes increase the visibility of regulatory and warning signs
- Fits on wood, U-channel and square steel sign posts
- Mounts to posts with hardware or VHB tape
- Available in two widths: 2 or 3 inches
- Available in two lengths: 60 or 72 inches
- Available in four colors: red, white, yellow and fluorescent yellow green



GUARDRAIL REFLECTORS

Guardrail Reflectors

Illuminate invisible guardrails at night with bright reflective markers that provide clear delineation. Pexco's guardrail markers are manufactured with engineering resins and are designed to endure the rigors of construction work zones and permanent installations. We can manufacture reflectors using any grade or color of reflective sheeting in order to meet your local requirements.



Ask for Pexco's "Gator Jaws" Hinge!

Our exclusive "Gator Jaws" feature greatly increases the strength of flexible reflectors by adding a mechanical bond to the hinge, which provides 500% greater bonding surface area between the rigid base and the flexible polyurethane hinge. Even in extreme cold temperatures, the hinge remains flexible! Available on our I-Flex, U-Flex and S-Flex Guardrail Reflectors.



Learn More:



Enhanced Linear Delineation (ELD)

Quickly provide linear delineation of concrete barrier walls or steel guardrails with reflectors from Pexco. A closely spaced row of Pexco's reflectors creates a "ribbon of light" to alert drivers of approaching curves.

Built with high brightness sheeting, these devices help motorists see changes in the roadway alignment, especially beneficial at night and in adverse weather. Adding red sheeting on the back side of the reflector sends a "Wrong Way" message to errant drivers.

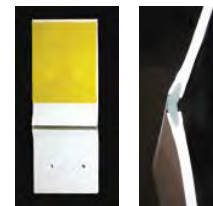
Benefits

- **Visibility** – superior guidance to motorists
- **Simple** – fast and easy to install onto steel or concrete
- **Economical** – 50% reduction in material and labor costs

Applications: W-beam guardrails, Wood and steel guardrail posts, Bridge approaches, hills, curves, gores, off-ramps

S-Flex

4" x 8.75" reflector with our unique "Gator Jaws" flexible polyurethane hinge that bends easily and bounces back. The S-Flex mounts to wood or steel guardrail posts. Designed for cold weather environments to help prevent loss of reflective tape during subzero temperatures.

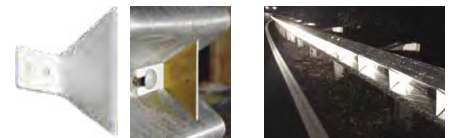


Butterfly

Trapezoidal reflectors fit perfectly inside W-beam guardrails, and are available in two styles – Bolt-on and Glue-on. You can create a "ribbon of light" to more safely guide drivers at night by closely spacing Butterfly markers every 18 inches.

Bolt on

Glue on



FG 427, 527

Both markers are 27 inches long and accommodate 36 square inches of sheeting. Can be mounted on guardrail posts positioning the reflectors 48 inches above the road surface.



Fat Cat

Oversized rigid guardrail marker measures 4"x15".

I-Flex

Fits over steel I-beam guardrail posts with "Gator Jaws" polyurethane hinge.



Straight

Straight reflectors provide a directional visual cue to the location of the guardrail and roadway. They are constructed of a UV-stabilized, high-impact thermo-plastic alloy and retro-reflective sheeting that can be applied to one or both sides for effectiveness.



BARRIER REFLECTORS

Barrier Reflectors

Peexo's PCBM (portable concrete barrier markers) are made of high-impact thermoplastics for long, maintenance-free life in the field. A variety of styles meet all your needs from high target value to impact resistance. We can manufacture reflectors using any grade or color of reflective sheeting in order to meet your local requirements.

Our exclusive "Gator Jaws" feature greatly increases the strength of flexible reflectors by adding a mechanical bond to the hinge which provides 500% greater bonding surface area between the rigid base and the flexible polyurethane hinge. Even in extreme cold temperatures, the hinge remains flexible! Available on T-9, T-12 and T-16 (not shown) Barrier Wall Reflectors.

Applications: Typical Applications of PCBMs include: Delineation of temporary or permanent concrete barrier walls, bridge parapets, or on top of wooden guardrail posts.



Hi-Viz Flex Tab

This flexible polyurethane marker mounts to median barrier walls. Available in white or yellow, 1 or 2-way reflective, with white, fluorescent yellow, orange or red "Wrong Way" prismatic sheeting, and factory-applied adhesive pad.



PCBM-L16

16-inch tall reflector designed to be mounted on top of a standard 32 inch concrete barrier wall.



Big Dog

Extra large top mount reflector that features 96 square inches of prismatic sheeting.



PCBM-T12

Barrier mount reflector featuring our "Gator Jaws" polyurethane hinge and 12 square inches of reflective sheeting.



Little Dog

A bit smaller than the Big Dog, but still provides incredible brightness with 72 square inches of reflective sheeting.



PCBM-9

MUTCD compliant and economical barrier mount reflector that can be used for top or side mount delineation.



PCBM-15

Used for top mount installations in heavy snow regions because the 8 inch height places the reflector above the snow on the barrier wall.



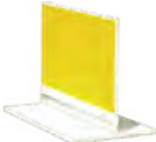
PCBM-9 HD

Center mount barrier reflector which houses our new 3 inch HOT Dot®.



PCBM-12

With over 12 square inches of reflective sheeting and the versatility of either top or side mount placement, this is our most popular marker!



PCBM-T9

A hinged marker with 9 inches of sheeting designed for use on top of moveable barrier systems.

BARRICADES — TYPE III AND O-FRAME

Type III Barricades

Type III Barricades are very lightweight — only 22 pounds — easy to handle and have few parts to assemble. Pexco's T3B panels are virtually unbreakable.

Testing and Certificates

- MASH-16 approved TL3 (FHWA Letter WZ-380 & WZ-381)
- NCHRP 350 — accepted (FHWA Letter WZ-63, -77, -150, -151)
- MUTCD — compliant

Upright options:

- 1.75" lightweight plastic X-Tube (WZ-380)
- 1.75" steel PSST upright (WZ-381)

Barricade feet options:

- 5' angle iron powder-coated white foot (WZ-63, -77, -381)
- 5' galvanized steel 2" PSST foot (WZ-150, -380)
- "The Yeti" 40# recycled rubber foot (WZ-151)

Hardware options:

- Standard bolts, washers and lock nuts
- Anti-theft hardware
- Quick release pin



Type III with the "Yeti" foot

X-Tube Upright

"O Frame" Parade-Style Barricades

Instantly create an MUTCD-compliant Type I or II barricade.

O-Frame impact-resistant and UV-stable thermoplastic barricades are designed for low-speed municipal applications including crowd control, parking control and plank box utility closures. They are ideal for cordoning off an area during public events.

Testing and Certificates

- NCHRP 350 accepted (FHWA Letter WZ-180a)
- MUTCD — compliant

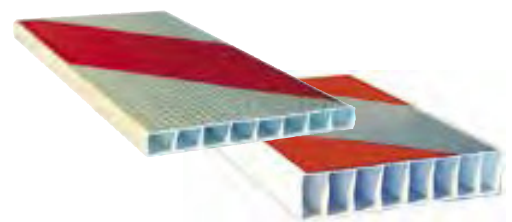
Benefits

- Accommodates 1" or 2" plastic or wood panels
- Panels available in 4, 6, 8, 10 and 12-foot standard lengths
- Panels and legs available for purchase separately or together
- Legs stack for easy storage
- Reflective options of ASTM Type I, IV & XI



Barricade Panels

- Wide flat panels make application of reflective sheeting simple and fast
- Either panel can be used to build a Type III or Parade-style barricade
- Internal I-beams for a rigid, lightweight board that reduces sagging and warping
- UV-stabilized high density polyethylene
- Available blank or sheeted, single-sided, double-sided or Chevron style, 2' to 14'
- Available in orange/white or red/white for "dead end" roads



BARRICADES

TEMPORARY PEDESTRIAN ACCESS ROUTE (TPAR)

TPAR Type II Pedestrian Access Barricade

TPAR Type II Barricades provide continuous guidance for all pedestrians in work zones. Pexco's TPAR Type II Barricade is an ADA, MUTCD, NCHRP 350, and MASH-16 compliant temporary traffic control device. It provides safe, continuous guidance for pedestrians through urban work zones. Components are quick to assemble.

TPAR Temporary Barricades are UV-stabilized, offer superior strength and withstand all weather conditions.



Testing and Certificates

- MASH-16 approved to TL3 (WZ-418)
- Meets 2024 MUTCD 6K.02 and 6K.10

Key Features

- Top and bottom barricade panels come pre-drilled for easy assembly
- The barricades nest together for easy transport and storage
- The top rail provides an easy to follow hand guide
- The lower barricade rail allows for water drainage and acts as a guide for pedestrians who use a cane
- TPAR ADA hinge connects the barricade panels to create angles and corners
- When fully assembled, the TPAR barricade creates a very narrow footprint of only 15 inches deep!
- Panels are available in white or fluorescent orange by special order
- Panels are available blank or with factory applied retroreflective sheeting, in lengths of 4', 6', or custom lengths
- Top and bottom barricade panels share a common vertical face with nothing protruding into the walkway, eliminating trip hazards



The top panel acts as a smooth continuous guide for the hand



The bottom panel acts as a detectable edge for pedestrians using canes



No part of the barricade protrudes into the walkway

Top View of Continuous Run



Create Angles & Corners



Using the ADA Hinge



Create angles and corners



Utility Box

Learn More:



GREEN CROSS — PEDESTRIAN SAFETY PRODUCTS

The Green Cross Product Line

Pexco offers many options for improving crosswalk safety suited to meet your program and your budget:

- Self-righting White and Fluorescent Yellow Green (FYG) safety posts to highlight crosswalk areas
- Bases to secure safety posts to the roadway
- Highly reflective flags, signs and stop paddles

Testing and Certificates

- NCHRP 350 accepted (FHWA Letters WZ-230, -231, -232)
- MUTCD — compliant

Green Cross Post Options:

Pexco offers several alternatives to metal posts for improved safety and durability:

- **42 inch City Post FYG Safety Post** — ultra-high impact post designed for the most demanding of installations, easily supports and rebounds the large Yield or Stop for Ped (R1-6 or R1-6A) signs
- **42 inch EFX FYG Safety Post** — super tough post designed to support larger signs and stand up to the most challenging installation, compatible with all FG 300 bases
- **42 inch X-Tube Upright** — lightweight square white reinforced plastic post for use with our Yeti base

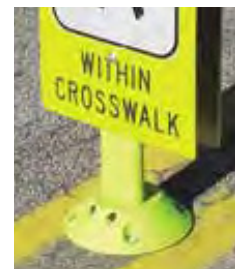
Green Cross Sign Options:

- **FG 300 FYG Heavy Duty Base** is for fixed installations
- **FG 300 35# Portable "Banana Base"** is engineered to support the weight of larger crosswalk signs, yet transport is easy due to the convenience of recessed handles
- **"The Yeti" 40# Portable Base** is heavy duty enough to stand up to high winds and support large crosswalk signs. The Yeti base is for use with the X-Tube upright only

Custom Sign Applications

- Both the City Post and FG 300 options are available
- Increase public safety awareness
- Easily create seasonal messages or local directions
- Bring your creative ideas to life with your own custom artwork

Contact your local Sales Manager for details and requirements



PARKING LOT SIGNS / VERTICAL PANELS

Parking Lot Sign System

The Pexco sign post system allows for rapid installation of lightweight, durable plastic sign posts. Less expensive than steel, and far more visible, the system takes only minutes to install and will last for years. These posts bend when struck, return to vertical and won't damage vehicles like steel posts.

The white X-Tube Post is a 1.75" square post supported by two internal, corner-to-corner reinforcing cross beams. Made from UV-stabilized polymers, the posts offer superior impact resistance and withstand all weather conditions.

The Parking Lot Base is created from a high impact-resistant UV-stabilized resin, and is designed to conserve space and reduce trip hazards. It accepts both the X-Tubes and 1.75" square steel tube and locks securely in place with a simple bolt or quick-release pin. Available with optional 35# rubber "banana" base or square top cap.



X-Tube



Parking Lot Sign Base



Portable Rubber Base



Optional Top Cap

Quick Release Pin base installed with epoxy

Opposing Traffic Lane Divider (OTLD)

Fluorescent orange vertical panels used as a center lane divider to separate opposing vehicular traffic on a two-lane, two-way operation.

- 12" x 18" (36" overall height)



Self-Righting Vertical Panels

Pexco work zone vertical panels stand up to tremendous abuse. The posts rebound and panels re-orient after being struck to eliminate resetting and keep workers off the road.

Type K Markers/Island Markers

Pexco's FG 300 Type K / Island markers are the ideal way to mark and identify both raised and painted islands. They alert operators to raised locations during snow plow operations and help prevent damage to signs, light posts and vehicles.



Opposing Traffic Lane Divider

Work Zone Vertical Panel on a Banana Base

FG 300 Type K Island Marker

WORK ZONE PAVEMENT MARKERS

TRPM — Flexible Chip Seal Markers

Simple to use “stick and stomp” TRPMs come with one or two clear plastic covers designed to protect the marker and reflective sheeting from asphalt spray or slurry products.

Key Features

- Factory-applied butyl pad for reliable “Stick and Stomp” installation
- Standard colors are yellow and white
- Available with single or double covers and multiple staple configurations
- High heat TRPMs are available for hot-applied, rubberized asphalt chip seals



TOM — Temporary Overlay Markers

Primarily for short-term temporary lane line markings in asphalt paving projects and other construction work zones, these markers are placed after final rolling of the new asphalt. TOMs are engineered for easy application and removal to reduce the amount of time workers are in the roadway.

Key Features

- Standard colors are yellow and white; additional colors by special order
- Factory-applied butyl pad keeps TOMs in place and are easily removed with a simple tug
- Available with bright and tough cube corner, micro-prismatic sheeting on one or both sides



RPMs and Halftracks

Effective and convenient long-term temporary road markers are designed to be long-lasting enough for use on both low volume roads and interstate highways to provide clear guidance to motorists both night and day. Simple to install and remove.

Key Features

- Two standard colors — white and yellow
- Reflective tape can be applied on one or both sides
- Optional factory-applied high-tack butyl adhesive pad allows for a peel and stick application to the roadway



Learn More:



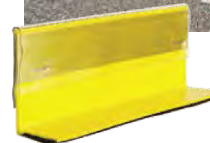
SUPER TOMS / RUMBLE STRIPS / BABY MARKERS

Super TOM and Super TRPM

An increasing number of states, including California, Illinois, Kansas, and Michigan, have begun using 6-inch wide lines on their roadways. Why? Because **6-inch markings reduce the number of crashes overall**, and most importantly reduce the number of fatal and severe crashes. Super TOMs not only match the move to wider lines, but also improve markings in construction and maintenance work zones, where greater visibility is most needed.

Key Features

- 50% increase in daytime visibility
- 500% increase in nighttime reflectivity
- Improves performance of automated driving technologies
- Conforms to 6-inch markings used in 27 States
- Suitable for high ADT roadways
- Super TOM without covers for asphalt paving projects
- Super TRPM with covers for bituminous resurfacing projects



Super TRPM with cover for chip sealing



Super TOM without cover for asphalt paving

Raised Rumble Strip

Our Rumble Strip Model 3708 is ideal to delineate gores, bike and pedestrian lanes, and road shoulders to help prevent dangerous run-off-the-road accidents. The 3708 rumble strip is a solid unibody marker which eliminates any hollow areas that can crack or crush when impacted by a vehicle.

Key Features

- Install with hot melt bitumen or 2-part epoxy
- Available in standard white and yellow, or in custom red, blue, and black
- Lengths: 8, 10, and 12 inches; 4, 5, 6, and 8 feet



Baby Road Markers

Self-adhesive 2" x 1.5" flexible raised pavement markers used on chip seal, slurry seals, and fog seals where nighttime reflectivity is not required. The marker is placed on an existing line or utility location prior to the surface treatment for each relocation.

Key Features

- Markers protrude up through the new surface, retaining the original location and eliminating the need to resurvey
- **Two types of Baby Road Markers are available:** Type Y – amber body; Type W – white body

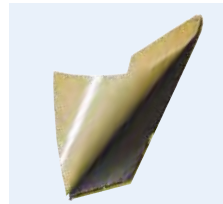


ADHESIVES AND ANCHORS



Road Marker Epoxy

Our rapid-setting, 2-part grey road marker epoxy is the most reliable permanent adhesion product available. Typical applications include our new City Post, FG 300 posts, both curb systems, and our rumble strips.



Hi-Tack Butyl Adhesive "Peel and Stick"

A butyl adhesive that offers quick, reliable adhesion for temporary installations of traffic control products. The butyl adhesive is available in 8" x 8" x 1/4" pads and 45-foot rolls and is suitable for bonding many of our channelizer and pavement marking products. The standard color is black; grey is available by special order.



Hand-held Epoxy Gun

FiRMmarker® is a clean, efficient, and easy-to-use adhesive system specifically formulated for channelizer posts, barrier and guardrail reflectors, and permanent raised pavement markers. The convenient packaging reduces prep time and waste.



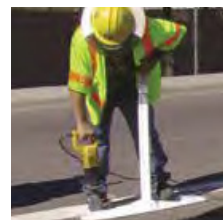
SuperBundy® Adhesive "Heat 'N Stick"

SuperBundy® Adhesive is perfect for permanently adhering larger objects like channelizer posts or curb sections. SuperBundy Adhesive has resilient characteristics, enabling it to remain flexible throughout its lifetime. Requires 2 pads per install.



DAPCO Adhesive 795A

A one-part, fast-cure adhesive for bonding concrete barrier markers, guardrail reflectors, and other delineation products. 795A requires no mixing, is effective over a broad temperature range, has excellent weathering properties, and offers "primerless" adhesion to concrete, asphalt, and steel. Available in 10 oz. and 20 oz. tubes. Used with a standard caulking gun.



FG 300 Anchor Bolts

Removable and reusable one-piece anchor bolts for FG 300 bases and curb sections have a finished hex head, an integral washer, dual-lead threads, and a chamfered tip.

2.5" concrete bolt



4" asphalt bolt



- One-piece bolts eliminate the need to keep track of and assemble separate pieces of traditional molly bolts before installation.
- Dual-lead threads prevent the bolts from spinning in the holes when tightened.

ADHESIVE APPLICATION CHART

Product	Page #	Adhesive 795A (10 oz tube installs)	Epoxy (1 quart each A plus B installs)	Primer #80 (10 oz spray can installs)
Butterfly Reflectors	14	35 units	200 units	—
City Post Anchor Cup (2-inch)	5	—	8 units	—
City Post Anchor Cup (4-inch)	5	—	2-3 units	—
City Post GD Post	5	—	5 units	—
DP 200 Surface Mount Base	12	2 units	8 units	75 units
FG 300 Standard Base	8	2 units	8 units	75 units
FG 300 Interstate and Turnpike Grade Curbs	7	1.25 units	3 units	—
Halftrack	20	—	300 units	100 units
Hi-Viz Flex Tab	15	—	—	200 units
I-Flex	14	16 units	175 units	—
Island Alert (48")	13	—	—	60 units
Metro Base	8	2 units	8 units	—
Parking Lot Base	19	—	12 units	—
PCBM 12 and 912	15	16 units	175 units	250 units
RPM	20	—	75 units	50 units
Rumble Strips (12")	21	—	25 units	—
Super TOMs/Super TRPMs	20	—	—	200 units
TRPM, TOM	21	—	—	135 units

All units are estimated. Your results may vary.



Click the CADdetails link on our website for up-to-date technical drawings and material specifications.

Visit our website for downloadable:

- Product Information PDF files
- Options and Applications PDF files
- Installation Procedure PDF files
- The most up-to-date 2025 Electric Product Catalog!



Search "Pexco Traffic Safety Channel" on YouTube for product videos and demonstrations or scan the QR code.

pexco.com/traffic



For more information please contact us at:

3110 70th Ave East, Tacoma, WA 98424

PHONE 253.284.8000 / EMAIL hwysales@pexco.com / WEB pexco.com