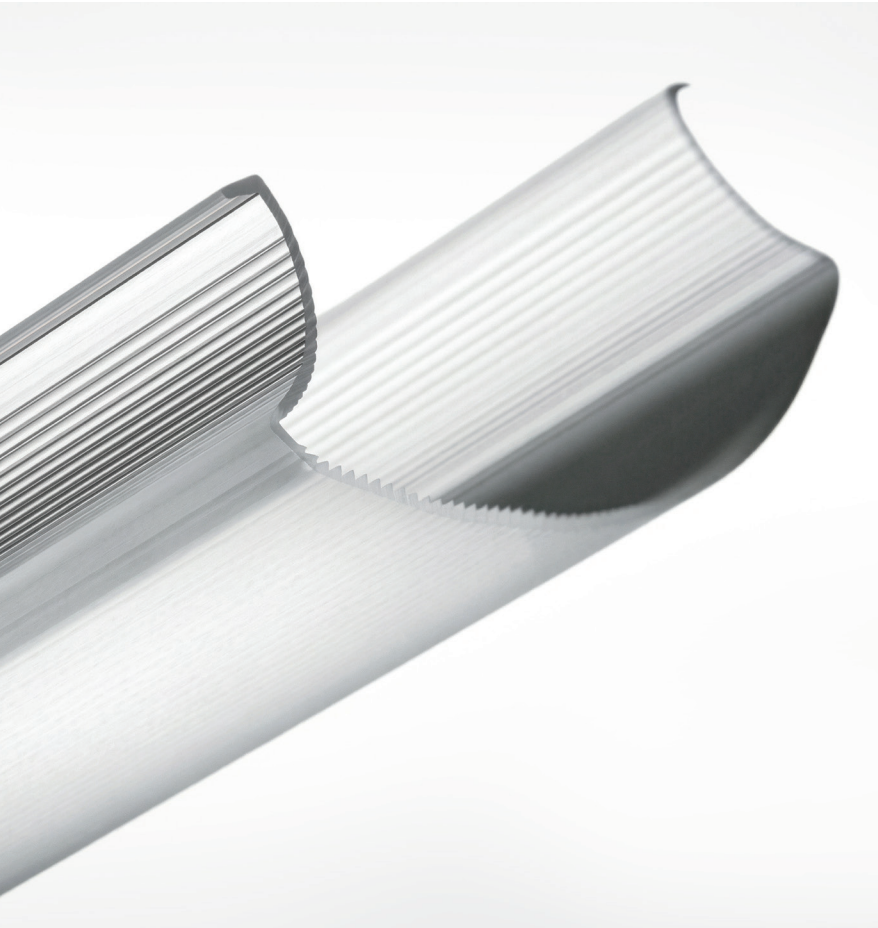


PEXCO

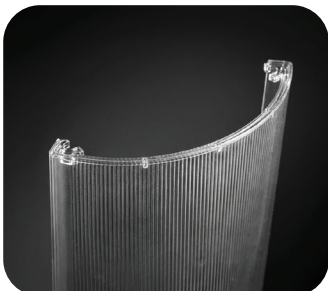
DURAFROST®

LIGHTING SOLUTIONS



Dura frost® is Pexco's proprietary frosted impact acrylic material blend, designed to deliver a consistent textured surface.

With significant diffusion to minimize light source imaging, Dura frost delivers an even distribution across the lens. This diffusion makes Dura frost an ideal material for use in architectural lighting fixtures, so the viewer does not see LED or other point sources. This ensures **even illumination, reduces glare and focuses the light** most economically and efficiently.



Your Partner in Custom Lighting Solutions

Pexco provides light fixture design and manufacturing expertise to help OEMs identify **the best material blend, light diffusion, hiding power, efficiency and overall manufacturability of custom profiles.**

Frosted impact acrylic material blends are highly valued in commercial lighting applications because they combine excellent light diffusion, optical clarity, impact resistance and design versatility.

Dura frost Frost Acrylic material offers superior impact resistance, a consistent textured surface and excellent diffusion to minimize lamp image while being very tough and UV resistant.

- Fingerprint and scratch resistant
- Excellent beam distribution
- High Performance in Lumen output
- Elimination of hot spots

DURAFROST

| Property | ASTM Test Method | Durayl® LED | |
|---|---------------------------------|-------------|-------|
| Physical | | | |
| Specific Gravity | D-792 | 1.16 | |
| Optical | | | |
| Light Transmission | Lutron LX-1108 Meter D-1003 (%) | Thickness | Value |
| | | 0.060" | — |
| | | 0.080" | 92 |
| | | 0.100" | — |
| | | 0.125" | 84 |
| Haze | D-1003 (%) | Thickness | Value |
| | | 0.060" | — |
| | | 0.080" | 97 |
| | | 0.100" | — |
| | | 0.125" | 98 |
| Mechanical | | | |
| Rockwell Hardness | D-785 (M Scale) | 50 | |
| Tensile | D-638 (Max. PSI) | 7,600 | |
| Tensile Modulus | D-638 (PSI) | 330,000 | |
| Flexural Strength | D-780 (PSI) | 12,500 | |
| Notched Izod (Milled Notch) | D-256 ft. lb/in of notch 73°F | 0.7 | |
| Thermal | | | |
| Deflection Temp Under Load Annealed 4 hrs/180°F | D-648 (°F) 3.6°F/min. 264 PS | 175 | |
| Flammability Class | D-1003 Class | HB | |

Learn more at www.pexco.com/products/lighting-products

Get in touch with our experts.

EMAIL sales@pexco.com / WEB pexco.com/contact / PHONE 844.352.5777